

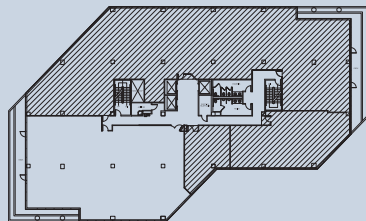
**ISLAND CORPORATE CENTER**

Suite 510 / Floor 5

5,671 RSF

7525 SE 24th Street, Mercer Island, WA 98040

[www.islandcorporatemercer.com](http://www.islandcorporatemercer.com)



**JIM ALLISON** P:(206) 607-1787 E:[jim.allison@am.jll.com](mailto:jim.allison@am.jll.com)

**LISA STEWART** P:(206) 607-1786 E:[lisa.stewart@am.jll.com](mailto:lisa.stewart@am.jll.com)

**CLEITA HARVEY** P:(206) 607-1794 E:[cleita.harvey@am.jll.com](mailto:cleita.harvey@am.jll.com)