

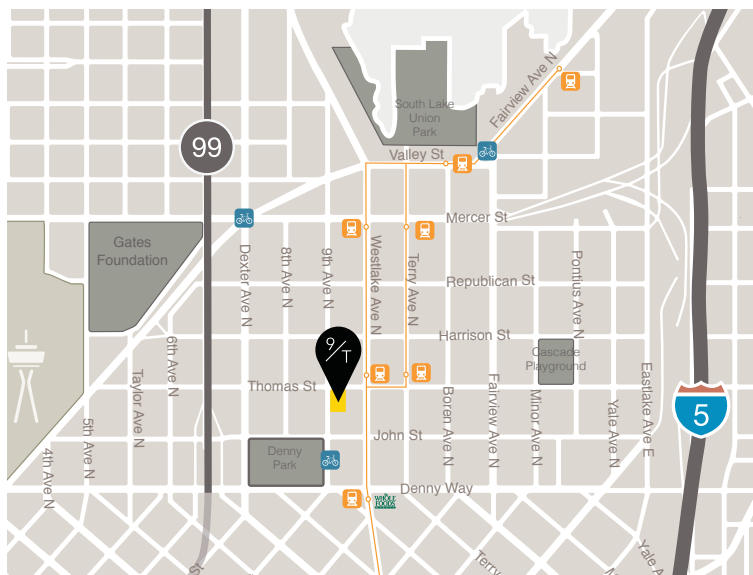
**9TH AND
THOMAS**
WITH SPECIAL GUESTS
SOUTH LAKE
FIVE UNION all ages are
OPENING Q4 2017



QUICK FACTS

- Opening Q4 2017
- 12 Floors / 156,656 RSF Office
- LEED Gold
- Office Floor Plates:
14,109 -19,971 RSF
- 11,438 RSF Retail
- Available Retail Spaces:
500-2,525 RSF
- 3 Floors of Parking

9thandthomas.com



South Lake Union's only boutique, multi-tenant Class A office building.

TEAM

Owner: 9th & Thomas Partners
Design-Build Contractor: Sellen

Architect: Olson Kundig Architects



Olson Kundig

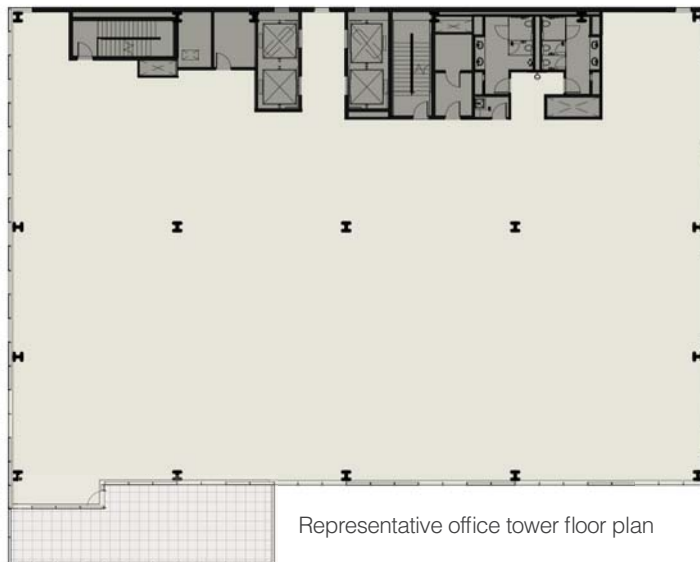


A neighborhood gathering spot with local, national, and international retailers.



BUILDING FEATURES

- Views of the Space Needle & Denny Park
- Outdoor decks & gardens on podium & rooftop
- Indoor/outdoor terraces on multiple floors
- 13'-8" floor-floor height
- Nearly column free floors in tower
- Operable windows
- Chilled beam cooling system
- Car charging stations
- Bike racks & shower rooms



Side loaded core with nearly column free floors for ultimate flexibility and floor-ceiling glass with decks and operable windows

urbis PARTNERS

520 Pike Street, Suite 1515,
Seattle, WA 98101

JIM ALLISON

206-315-8687
jallison@urbispartners.com

CLEITA HARVEY

206-315-0625
charvey@urbispartners.com

LISA STEWART

206-622-1480
lstewart@urbispartners.com

Information regarding this property has either been supplied to our firm by the owner or obtained from sources deemed reliable. Interested parties are expected to carefully investigate and verify the above information as well as other matters affecting this property.

www.urbispartners.com